



Year End Report 2018

Greetings from Sumba!

2018 came and went with a rush of excitement in the Foundation. We had a main focus on expanding our Learning Development Project including the building our Learning Center at Hobawawi. In addition, we also took the time to upgrade some of our internal infrastructure, renovating staff housing and building a new staff canteen. This is just a few of the highlights from the year and below you will find more details about the core work in our Water, Health Project, Economic, Nutrition and Scholarship projects as well.

Enjoy catching up with the great work the team has accomplished over the past year and stay tuned for more development with our online website and platform we are creating to bring you more information and insight to our work than ever before.

Fondly,

A handwritten signature in black ink, appearing to read 'Kenny Knickerbocker', with a long horizontal flourish extending to the right.

Kenny Knickerbocker
General Manager

Contributions to this report provided by: Cosmos Biaya (Social and Community Relations), Rainy Octora (Head of Nutrition Projects), Dr. Claus Bogh (Ketua & Director of Health Programs) and Kenny Knickerbocker (General Manager)
Cover, end page, and additional photos courtesy of Jason Childs (instagram @childsphotos)

Index:

<u>Water project:</u>	<u>4</u>
<u>Nutrition programs:</u>	<u>7</u>
<u>School Lunch Program:</u>	<u>7</u>
<u>Malnutrition Program:</u>	<u>8</u>
<u>Health programs:</u>	<u>8</u>
<u>Sumba Foundation Clinics:</u>	<u>8</u>
<u>Malaria Control Program:</u>	<u>8</u>
<u>Mama 2 Mama:</u>	<u>10</u>
<u>Sumba Eye Program:</u>	<u>10</u>
<u>Low-Smoke Burners:</u>	<u>10</u>
<u>Malaria Training Center:</u>	<u>11</u>
<u>Nursing Scholarship Program:</u>	<u>11</u>
<u>Education:</u>	<u>11</u>
<u>Economic Opportunities (Farming)</u>	<u>13</u>
<u>General Foundation News:</u>	<u>13</u>
<u>Future Projects</u>	<u>14</u>
<u>Mission Statement:</u>	<u>15</u>

WATER PROJECTS

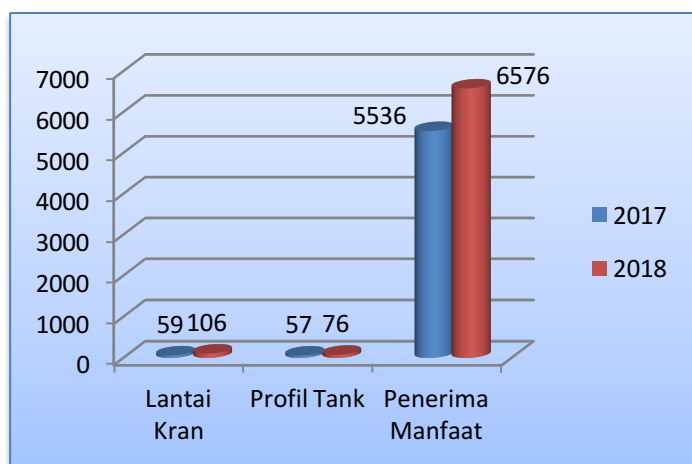
The development of clean water programs continued to grow and the level of sustainability and maintenance of the water facilities by the community has increased as well. This second point is crucial to the future success of all water projects as we work towards creating communities that are self-sufficient and who one day will be able to have the water project handed over to be supervised, controlled and maintained by the village water committees. Water services expanded coverage of public



government facilities, such as primary and secondary schools, and at the village level in 2 sub-districts spread over 12 villages.

The success of this program is inseparable from the active participation of the community in the implementation of activities and support from the water project and foundation management team. The aim of community participation is to strengthen the sense of belonging and responsibility for the program and to ensure the safety and sustainability of the clean water program at each program location.

Our clean water program progress in 2018 has continued to provide more people with access to potable water. A large focus has been to upgrade and restore water flow to previously existing projects that were in need of major renovation. We have increased the reach of these projects from 5,536 people in 2017 to 6,576 in 2018. In 2019, we will continue to expand such projects which have been accounted for in the above figures (such as Hobawawi 2 / Kabolu Tanarara) which will be extended to include a renovation of the Hobawawi 2 / Bepak portion of that water project, restoring water distribution north to the growing community on the main road just north of our Health Clinic at Hobawawi.



In terms of construction of water projects in 2018, it went quite well. The water project team succeeded in completing 7 of 8 planned projects. There were 4 main projects (Tamiang, Weikabonu / Katelu, Bali Loku Elementary & Middle School and Wanukaka Christian Middle School) and the implementation of 3 renovation and expansion projects (Lahihadang / SD Kadoku, Galuwatu / Wunitlaka and Hobawawi 2 / Kabolu Tanarara).

The only project that was planned for 2018 which we were not able to do was the well at Kapaka. The initial village socialization went well and the benefactors in the village were in support of moving forward with the work to be carried out at the water source to contain the water and maintain its potability year-round. Once it came time to start the execution of the proposed project, the second village socialization to organize the people to bring the materials and when the start of the work would progress, the people decided they no longer wanted to enclose the water source in a concrete

containment and that they wanted it to be left as is. We will continue to monitor the water available in the area there and see if there is a future opportunity to revisit the possibility of increasing the quality of maintenance of the water there, or if a secondary source slightly further down the vein can be found and used without disturbing the current water source at Kapaka. For now, the project will remain on hold until a solution can be found.

Since mid-September 2016 until the end of 2018 the water project team has renovated and new-built a total of 76 fiber water tanks and 106 water faucet stations. Of the 106 water faucet stations 40 faucet stations are completely new either as project expansion or new projects like at SD / SMP Bali Loku, and from 76 fiber water tanks, 22 are brand new stations that never existed before and we have succeeded in serving around 6389 people and have also succeeded in opening a pipeline network of 27, 250 M or equivalent to 109 rollers of HDPE pipes used for these projects specifically.

The service of the general community to the villages supported by the Sumba Foundation also continues to strive to intervene clean programs in public places / public facilitation such as schools. Currently SF has served 8 schools, namely SMAN 1 Wanukaka, Wanukaka Christian Middle School, Bali Loku Primary and Middle Schools, SD Rua in Hobawawi, Matanyira Primary School, Kadoku Primary School and Larawatu Primary School. As we look forward to 2019, a key focus will be expanding to providing more schools in the area with direct access to water and implementing construction of new toilets and washroom facilities where none existed before and renovating existing facilities at schools in the area.

The following is a description of the results of the individual projects where the major work activities took place during 2018:

Tamiang Project



Tamiang Water Project is one of our older projects that distributes water to Kadoku and Weihola Villages. The project has had several technical issues for the past few years and in need of a complete overhaul. In 2018, the Water project team began the renovation by rebuilding all existing water stations and adding 4 new fiber water tanks and 6 new water faucet stations at 4 villages (Wekatarri, Praikapetang, Ngadu Leru and Praikalebung). There were also 2 old water faucet stations and 2 fiber water tanks that were renovated along with the upgrade and we now have 6 water tanks with 8 water stations that are

providing the people in that area with access to clean water.

Weikabonu / Katelu

At this project, there is 1 large reservoir setup to distribute water from Paelu Pari village to the surrounding area with a capacity of 10,600 L via 9 water stations comprised of 7 fiber water tanks and 9 water faucet stations. The process of implementing this activity involves community participation which we have set as a standard for all new projects and any projects being renovated. This community participation involves the setup of water committees from all villages benefitting from the water project in that area and is responsible for assisting with the work, reporting damage and



breakdowns when they occur, as well as collecting each household's 10,000 RP (\$0.70 USD) for electricity utility to power the water pump for distribution.

Loku Bali Elementary School & Middle School



Bali Loku Village is located in Wanukaka. Due to the distance from the village to the Elementary and Middle schools, we have created a brand-new gravity feed water project from a mountain spring about 3 kilometers into the jungle up the mountain to support those schools and the villages immediately surrounding. The project implementation went well

with the active participation of the community, namely the parents of students from the Bali Loku Elementary and Middle School.

In total, we constructed 1 well containment to channel the water from the mountain spring, 6 water stations going down the mountain to the schools supported by 4 fiber water tanks, and ending with 2 brand new toilets at the schools to increase the quality of health and hygiene for the students.



Wanukaka Christian Middle School

In continuing to support the schools throughout the area that need the most help, we surveyed this Christian Middle School's water well and toilet situation. The well was contaminated and the water no longer potable. We worked at the school to close this well and hand dig a brand new well and properly sealed it with the brick and cement to ensure the water remains potable. Once the well was finished, we then built 2 new toilets and washrooms for the students attending the school.



Expansion Projects

(Weikabonu / Lahihadang, Galuwatu / Wunit Laka, Hobawawi 2 / Kablu Tarara)

From 2018, we took 3 projects that had previously been renovated, and in keeping up with a growing population and people moving outside their traditional villages to new homes in neighboring areas, we expanded Weikabonu, Galuwatu and Hobawawi 2 to cope with this. In addition to extended these lines to reach more people, we also took the opportunity to socialize the importance of following the community water committee system we have put in place so we can address any issues that may arise and prevent the projects and lines from breakdown, abuse and unnecessary damage. In the expansion of these projects, 7 new water stations and 3 new water tanks with a total capacity of 15,600 L have been built with a piping network comprised of 15,000 M to connect them to their respective projects.

NUTRITION PROJECTS

After addressing the major concerns of water and health care in our core coverage area, we began to look at children specifically as they are the future of the Sumba. In 2008, we started the school lunch program providing healthy, nutritious high-protein meals for students in two Primary Schools, encouraging class attendance, and providing the necessary means for mental growth and development and launched our Infant Nutrition Project starting with direct intervention for just 6 children who were life-threatening severely malnourished.

Stunted in growth is a massive problem in rural Sumba and we find as many as 70% of school children being below the normal average height and weight for their age. This is the results of a multitude of problems in the local diet and availability of food. First of all, there is just not enough food for all and the standard local meals are low in calories, protein and micronutrients. Also, the children in rural Sumba normally do not get any form of lunch pack or snack when they go to school and even breakfast can be a random treat. To alleviate these major issues, we added the malnutrition program in 2008 and the school lunch program in 2010 and have since been expanding these programs to reach thousands of children.

School Lunch Program



In 2018, we worked together with 11 Primary schools to provide their students with 3 high protein and nutritious meals per week.

This was a continuation of the expansion the project underwent in 2017.

Our expected results from providing these meals include:

1. Weight gain/loss on average of 1,5-2 kg or about 6-8% and increased height growth and BMI development for students
2. Better attendance, attention and participation in class
3. Increased mental development including higher grades and exam scores



School lunch increase Weight				
School	1st Month	6th Month	Increase/kg	Increase
Pantai Rua	24.5	26	1.50	6%
MehangMata	23.60	25.40	1.80	8%
Pahanguladi	23.07	25	1.80	8%
Waimadaka	24.94	26.93	1.99	8%

Throughout 2018 we distributed 278,040 meals for 2,317 kids, an increase of 34% compare to 2017. We have seen students who were severely undernourished start to increase BMI and weight gain for those under the WHO international standard for age/weight/gender. The overall total number of students

decreased in 2018 compared to 2017, however the period of time that we ran our program in the schools providing lunch was for a longer length of time.

Lunch is provided in 11 Primary school 3 meals per week per school with the following rotating menu:

-2 meals per week consist of the following: chicken, fish or eggs, with mixed vegetables supplemented with Tempe or Tofu, and rice.

-1 meal per week is a porridge consisting of: local Mung bean for protein, milk broth and tapioca beads.

We are expecting to see further increases in weight gain for those that are well below the average weight/age/gender ratio and BMI increase for those underweight, and BMI decrease for a select few who are overweight. For increase in height we do not expect to see this factor change much over the course of the 1 year program due the length of time, however we anticipate that this will be a

generational impact and that students who are children now will have a higher average height come full maturity/adulthood by comparison to their parents.

The goal for 2019 is to increase the nutritional value from the school lunch and see greater impact on the student's overall health and growth/mental development. We also plan to add to our current menu additional sources of protein, such as beef, and to also serve them milk at lunch.

In addition to providing children the necessary nutrition they require, we are continuing to teach our health and hygiene course to students in grades 4 & 5 (10-11 years old) focusing on what it means to be healthy, what it means to be sick, wounds and infections, malaria, proper diet and nutrition, body hygiene for brushing teeth and washing hands, and about trash and waste.

Infant Nutrition Project



This direct intervention program continues to be a staple for new parents and their young children in the villages in our core area. While much work has been done to increase the quality of life for many people, there are still pockets of villages and people who are not only

impoverished, but also lack the proper education to properly take care of their children when it comes to their diet. The lack of parenthood education, protein deficiency, and the number of children that a typical couple will have makes it difficult for young children to get the nutrients, vitamins and essential food basics they need to grow up strong and healthy. To date, we have helped 1,194 children 6 months old to 5 years old in our program and currently have 87 kids enrolled from 2 different areas, Litti and Wodokaha



We increased the number of meals and kids by 14% in 2018. And increased average weight gain by 38% compare to 2017, also we continue giving the food supplement Nutrilite Little bits. Update on Triplets, we still have them on the Infant Nutrition Project and three of them are healthy and happy 😊

HEALTH PROJECTS

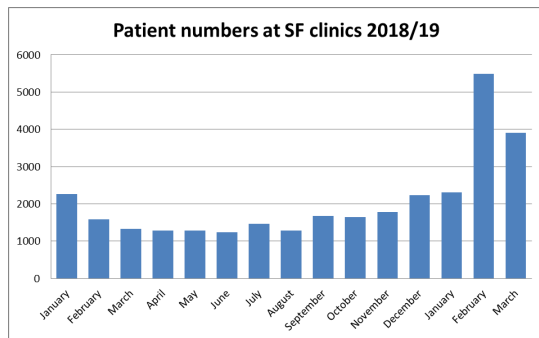
Clinics

In 2018, we focused on the follow core Health projects: Sumba Foundation Health Clinics, Village malaria screening, Mama2Mama pre-natal care, Sumba Eye Program, establishing the Low-Smoke program, Malaria Training Center and Sumba Foundation Nurse Scholarship Program.

Sumba Foundation Health Clinics

This year we saw a total of 19,053 patients across all four clinics, an overall decrease in patient visits from 2017. Our flagship clinic at Hobawawi and our furthest clinic in Lamboya saw the most patient visits as shown in the chart here.

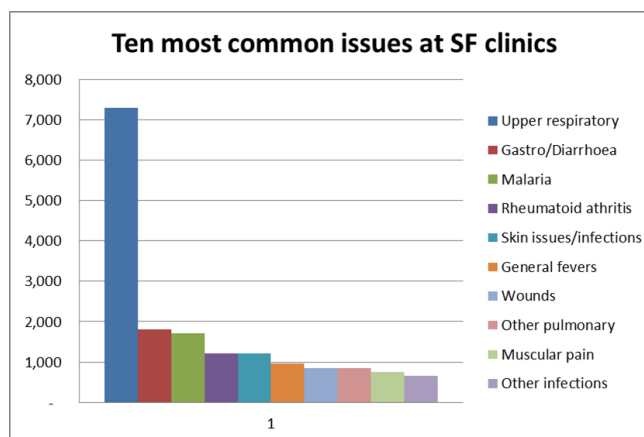
SF clinic patient numbers 2018				
Hobawawi	Lamboya	Rajaka	Rua	Total patients
6,900	6,872	3,263	2,018	19,053



The busiest months of the year are between December and January during the raining season when more people are exposed to cold and flu and as the mosquito population increases creating greater risk for transmission of malaria. At the end of 2018 we hired a full time Medical Doctor to assist in on-site training of staff, providing consultation and diagnosis to patients, and running the daily operation of the health project work in the clinics and in the field. You can see from the chart below, after joining in January 2019, the number of patient visits skyrocketed to nearly 5,500 patients in February 2019 alone, a dramatic increase by comparison to 1,500 patients in February 2018 just a year earlier.

Patient increase 2019			
Month	January	February	March
2018	2261	1586	1327
2019	2313	5493	3902
	2%	246%	194%

Above, you can see a side by side comparison of the number of patient visits in the first 3 months of 2018 versus the first 3 months of 2019. To the right is a chart of the patient cases and the most common issues that people are coming in to the clinics to be treated for.



We have done an incredible amount of work to combat malaria in our area and across the whole island and you can see from the chart (above right) that malaria is now the 3rd most common issue for patients who come to the clinic. At number 2 is Gastro/Diarrhea and the number 1 issue for patients coming to see us is for Upper Respiratory cases. It is unsurprising that the data is coming to us this way as we have been tracking patient cases now for 15 years and have been watching the cases for malaria and diarrhea decrease, while respiratory issues have largely gone unchanged.

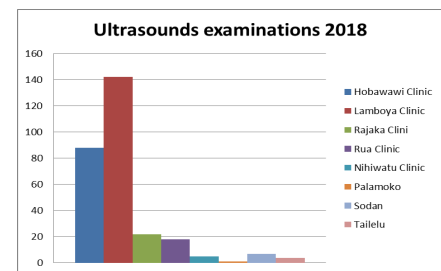
From this data, we can see the need to focus more on the root cause of why respiratory issues are such a large problem and to address this, we have initiated our low-smoke burner project to begin to reduce the amount of smoke that people are breathing in when they are cooking and sleeping around the open fire pit in a traditional Sumbanese home in the village. More about the low-smoke burner project below.

In addition to the patients being seen and treated in the clinics, we saw an additional 8,899 people out in the villages mass screening everyone to check for any potential hosts or undiagnosed/dormant malaria cases. You can in the breakdown above out of all the patients screened for malaria, only 253 people tested positive, 2.8% of the tested population.

Village Malaria screenings and cases 2018					
	Tested	P. falciparum	P. vivax	P. malariae	Total
Desa Lamboya Bawa	1,139	28	23	0	51
Desa Rajaka	1,077	5	1	0	6
Desa Ringu rara	1,337	18	8	0	26
Desa Rua	683	20	12	0	32
Desa Wee libo	1,458	57	15	0	72
Kampung Deke/Kerewei	139	11	3	0	14
Nihiwatu	2,929	37	12	1	50
Haweri	137	1	1	0	2
Total	8,899	177	75	1	253
Percentage		2.0%	0.8%	0.0%	2.8%

Mama2Mama

Assisting pregnant mothers and mothers to be has now been going on for 5 years. We have been working both with the government clinics and government mid-wife clinics as well as with the various villages and the infant nutrition program to help maximize the number for mothers we can assist with pre-natal care as well as early childhood growth and development post-birth. To the right is a breakdown of the ultrasound and pre-natal examinations that took place in 2018.



Sumba Eye Program

For 10 years we have worked closely with the RACS and the Sumba Eye Program to help restore vision to people across the island. In 2018, the team of eye doctors and surgeons came out in May for their initial screenings and final surveys and again in August to perform the large-scale screening and eye surgery in Anakalang Hospital. The first half of the year was slow



with patients for screening, however with the success of the initial visit of the SEP resulting in 846 patients who were screened, momentum picked up and the after their second visit the team continued to increase the number of patients through the end of the year. We look forward to even more success from the project with their next visits in 2019.

Eye Care Program 2018								
	Hobawawi	Lamboya	Rajaka	Rua	Villages	SEP	Total	Glasses
January	4	7	7				18	14
February		9		5			14	12
March	12	4			26		42	38
April	8	6	7				21	16
May	8					846	854	574
June	4		7				11	7
July	3	21	34				58	52
August	43	38	12	29		1,234	1,356	1,246
September	44	28	44	48			164	146
October	45	20	21	33			119	113
November	37	35	12	32			116	108
December	13	23	15	16	55		122	115
Total	221	191	159	163	81	2,080	2,895	2,441

Low-Smoke Burners

To address the issue of the extensive number of patients coming to our clinics to be treated for respiratory issues, we have engaged in a low-smoke burner program. Over the past several years we have looked at a variety of styles, types and level of efficiency low-smoke burners to use for this project and on small scale trialed a few different types to see the response in the villages. The challenge was to find something that was both effective and in a style with which the people were comfortable with. As this project focuses on the houses in the traditional Sumbanese villages, we needed to be cognizant of the cultural significance of what the fireplace in the middle of the home represents and careful not to disrupt it. In mid-2018 we found a very simple and yet effective low-smoke burner made out of a porous ceramic material that is completely biodegradable. Having been used in Ubud by farmers in the country-side there, we managed to purchase a total of 550 to be rolled out through 2019 with another 1,000 pieces on standby to be distributed in 2 more batches of 500 as the project continues.



Low Smoke Program 2018/19	
Stoves purchased	550
Total desas surveyed	10
Total houses surveyed	1,398
Total traditional villages	37
Total selected houses	503

Here you can see the data that has been collected for our initial survey and distribution for the low-smoke burners. In addition to the distribution of the burners themselves, we are also hanging cardboard disks in the home above the cooking area to track how bad the smoke accumulates and what sort of impact the low-smoke burners have in reducing it.

Malaria Training Center

2018 was our 9th year running the Malaria Training Center and to-date we have graduated more than 500 students through the program including Sumba Foundation Nursing Staff, Government Nurses and Health Technicians, and other

	Batches	Students
Full Malaria program	4	50
Short Malaria program	2	123
Total	6	183



freelance Nurses with independent organizations. The 6 batches included students from all 4 regions of Sumba, Kupang, Papua, and Jakarta for a total of 183 students for 2018.

In 2019, we will continue to run our training course in Malaria Microscopy giving any nurse who passes the course nationally recognized accredited certification in malaria diagnosis and treatment.

In addition to Malaria Training, we will also launch our Tuberculosis Training program to help combat and reduce the spread of TB on the island through properly educated care givers who know how to take, handle, diagnosis and treat TB.

Nursing Scholarships

Sumba Foundation Scholarship Program 2018							
No	Student name	Degree		Duration	Enrolled	Exp finish	Sponsor
1	Marta horo	Nurse extention	Stikes, Semarang	1 year	Jun-17	Jun-18	SF donor
2	Mariaian Pandi	Akber Nurse	Akber, Waingapu	3 years	Aug-16	Aug-19	Genesis
3	Rambu Anamotor	Akber Nurse	Akber, Waingapu	3 years	Aug-17	Aug-20	Genesis
4	Erdinan Bayo	Akber Nurse	Akber, Waingapu	3 years	Aug-17	Aug-20	Genesis
5	Ricard Ruben	Akber Nurse	Akber, Waingapu	3 years	Aug-17	Aug-20	Genesis
6	Mariana Lede	Akber Nurse	Akber, Waikabubak	3 years	Aug-17	Aug-20	Adecco
7	Ani Maryani	Akber Nurse	Akber, Waikabubak	3 years	Aug-17	Aug-20	Adecco
8	Rani Betsi Lado	Akber Nurse	Akber, Waikabubak	3 years	Aug-17	Aug-20	Adecco
9	Anggreini Bili	Akber Nurse	Akber, Waikabubak	3 years	Aug-17	Aug-20	Adecco
10	Novia B.D Wawu	Akber Nurse	Akber, Waikabubak	3 years	Aug-17	Aug-20	Adecco
11	Stefanus C.W. wunga	Akber Nurse	Akber, Waikabubak	3 years	Aug-17	Aug-20	Adecco
12	Ardianti Margareta Sa	Akber Nurse	Akber, Waikabubak	3 years	Aug-17	Aug-20	Adecco
13	Rini Debora Lado	Akber Nurse	Akber, Waikabubak	3 years	Aug-17	Aug-20	Adecco
14	Dewi Rambu B. Uka	Akber Nurse	Akber, Waikabubak	3 years	Aug-17	Aug-20	Adecco

Education is rooted deeply in all aspects of the foundation, whether it is implementing water systems and working with the community to look after them, teaching students English, or parents how to better take care of their children's nutrition and health. We currently have 13 students who are in nursing school now working on their degrees and one student

Martha Horo (Ma'a) who recently finished her nursing extension and re-joined our staff at the end of 2018. This batch of scholarship students will finish their degrees in 2020 take some of them on as part of the Sumba Foundation Health Project team allowing us to send other students to get their initial degrees and previous graduates to expand their education and skills sets by getting higher certification and degrees.

EDUCATION

On November 2nd 2017, we had our first ever fundraiser in Asia at the Upper House in Hong Kong to raise funds for the construction of our Learning Development Center which would allow us a

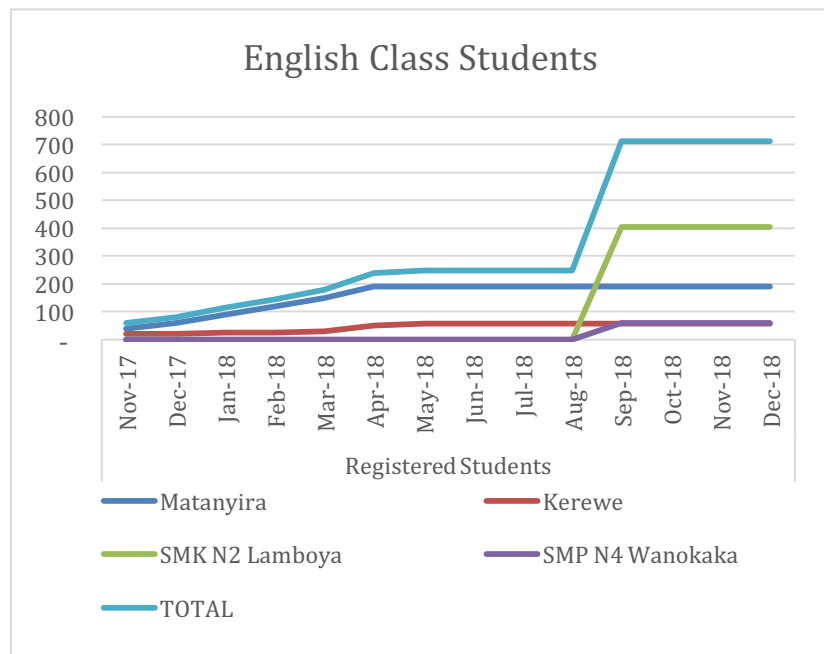


centralized location for children from the local area a place to come and learn English language skills as well as computer skills. Two weeks after the fundraiser we began teaching English specific classes to the children in Matanyira starting with just a small group of 39 students. That number quickly grew as the children shared with each other by word of mouth what was going on. In just a few months we had 190 children who were signed up and coming to our English class 2 times per week.

In January 2018, we began construction of a small satellite learning hut for the children at Kerewe beach who had started gathering there for afternoon English class once a week. With about 20 students who started showing up the small Learning hut gave the kids a central gather place with shade and by March 2018 the Learning Hut at Kerewe was completed and had 60 registered students. The English classes that we are providing are not only completely free of any charge or official sign up, but it is currently open to any children in the area who want to join, void of penalty if they do not show up for a class.



At the end of 2018 we already had 4 different locations where we were teaching English classes, Matanyira, Kerewe, Lamboya High School and Wanokaka Middle School for with 4 teachers assisting 712 students with English Language. Our team has grown to 8 English teachers that are fully employed by the Sumba Foundation and increased the program to help support 2,030 students and young children begin to learn English at 12 different locations (3 Sumba Foundation sites and 9 elementary, junior and senior high school) in the area as of April 2019.



The youngest group of students (ages 3-6 years old) we teach both the basics of English and Bahasa Indonesia, as many of the children at this age are not fluent in the National Language of Indonesia and require the fundamental building blocks to facilitate learning English from scratch. For the most advance groups of students (11 years to 18 years depending on their drive and passion to learn English) we have incorporated teaching them additional English and tablet technology facilitated by the good folks at DuoLingo who generously donated 20 brand new tablets fully loaded with DuoLingo premium and 2 HD projectors in September 2018.

As we bring more learning materials to children, we created a rolling library for our students at Kerewe. This rolling library is stocked with age appropriate reading books in simple English and Indonesian so that the students can practice the skills they learn when English class is not in session. Each book is cataloged with a check out card so we can monitor the use of the libraries and their effectiveness. For 2019, we plan to increase the number of portable libraries to localized areas kids can practice at home.



From May 2018, we began construction of our Learning Development Center. The design is based off the traditional Sumbanese jewelry “Mamoli” set with an open-air atrium for teaching classes, hosting events and showing educational movies accompanied by a computer lab at the back and a storage room in the front. This site will be the main site of our English class (currently students have been gathering at a nearby church) and plans for

evolving the Learning Center beyond just English and Computers are already being discussed.

We are continuing to look for qualified, enthusiastic and inspiring teachers to help us expand even further here around Nihiwatu to more schools and local areas as well as into Wanokaka where many students are still struggling in school.



ECONOMIC OPPORTUNITIES

Farming



At the end of 2017 we began re-introducing our farming project at Welajung with a small group of farmers. By the end of the year we had established 5 different farming project locations supporting 48 local farmers. The project is rooted in helping small farms become year-round economic vehicles. With



the support that we give, once farmers begin to have ripe vegetables we buy them from them to add better nutrition to our school lunch. Each farm contributes back 10% of every purchase in vegetables as their contribution to support the project. Any remaining balance of veggies is then either used in the home or sold at the market for additional income.

Our 5 farming projects in 2018 included: Welajung, Katang, Rajaka, Matanyira and Galu Kopi. Between August and December, we purchased over \$5,000 worth to use for School Lunch and at our staff canteen. We meet regularly with the farms to discuss their difficulties, plan crop rotation and to see how we can make the farming grow.

GENERAL FOUNDATION NEWS

In addition to expanding our Education initiative into a core project, we have also taken the time to increase our internal infrastructure to help support the growth of the foundation.

From May to September 2018 we dismantled all the equipment previously used in our bio fuel project (concluded in 2011) and began renovation work at the Bio Diesel facility to turn it into brand new staff housing to create more comfortable living conditions for our nurses, teachers and other project staff. In addition to the 7 newly built rooms and a lounge where we are able to host staff movie night and enjoy developing teambuilding and comradery. Just next to the rooms we also constructed a new staff canteen operating 7 days a week for all staff to enjoy. After completion of

these two facilities, we moved on to renovating the old nurse and senior staff rooms to ensure all staff accommodations were upgraded.

From July through September, we worked on a number of digital projects including the filming of a new Sumba Foundation film by Aaron Krummel and his production studio. Aaron has been doing our movies for years now and with the launch of the latest film, takes a look at the Sumba Foundation and life here through the eyes of a young Sumbanese girl named Asti. We also launched our completely re-vamped and updated website site with new photos, a brand-new look and design that is easier to navigate and find the information you are looking for. Be it how to donate, information on our projects, reports, photos or videos, they are all there now with easy to find access.

With the increasing project work and future initiatives, we look to undertake, we purchased a new hydraulic dump truck so staff working in construction, water projects, moving materials and collecting trash could be more efficient by focusing on the technical side of projects instead of using large amounts of physical energy to shovel sand and gravel, or unload stones by hand.

FUTURE PROJECTS 2019

Low-smoke burners continued (Health)
Trash Information and Collection (Education)
Teacher Scholarships (Education)
Fish Farming (Economic Opportunities)
Clean water to schools (Water Project)

We have seen great success in 2018 expanding into new projects and upgrading some of our facilities to keep up with the growth. While our expectations for 2019 are higher than ever before, we are confident that with the continued support from our donors, contributors, supporters and least of all our growing Sumba Foundation Team, that we will be able to take the Sumba Foundation Projects further and provide a better quality of life and education for the future of the Sumbanese people.

On behalf of the Sumbanese, Sumba Foundation Staff, Board of Directors, and all those involved behind the scenes, thank you all for your continued support!

The Sumba Foundation

www.sumbafoundation.org



Our Mission

The Sumba Foundation is deeply committed to lessening the consequences of poverty on the island of Sumba. Our aim is to provide humanitarian aid by fostering village-based projects that impact health (including access and malaria control), education, water, and income-generation, while preserving and respecting the fragile culture and traditions of the Sumbanese people.

A large part of the financial support for the foundation comes from guests of the Nihi Sumba Island. With their involvement, we can create small miracles every day.