



January 2018

Water Projects

Werata: In January, the Water Project team worked on expanding the reach of the water from the new project to two new locations, Logawa and Weraba. At each location we set up a gravity feed system and normal faucet stations that are fed from the holding tanks located farther up the hill from these villages.



Sodan: Routine maintenance was required on the Sodan/Mangga water project as some minor piping needed replacing as well as the taps at the water faucet stations to be changed due to heavy use and natural wear. We anticipated to see this as the taps there usually require changing about 2 times per year.

Hobawawi II: As we continue to work towards riviving previous water projects and upgrade them to the new standards to water operations and community water committee involvement work has continued on upgrading our project there at the school and clinic. Once the water flow was re-established last month, we began checking for leaks and breaks in the lines. New piping was installed to run to the SD Hobawawi Primary School and the Hobawawi Clinic using the installation of the new piping as a team building event for all SF staff. Over the next few months we will renovate the older water stations and create some new ones in the area to help maximize water distribution in the surrounding area.



We have also sourced a new supplier to assist us in the production of brand new deep well hand pumps for all the water projects in Klanten, Central Java. These new hand pumps are currently in production and will be sent to us in batches as we begin to replace ones that have already broken down beyond repair and start to install them at projects that previously did not get one installed due to lack of supply.

Nutrition Project

School Lunch: Weather has played a minor role in the operations of the school lunch project and the team continues to distribute the lunch to 11 schools. Having removed the two school in Sodan across the river, they have since been replaced by Mehang Mata (sister school to Weimadaka) and SD Kadoku (just outside of Kadoku and Weihola villages). We will continue with these 2 schools and the previous 9 schools until June when the school year ends. Our goal is to make preparations to expand the project to cover 15 schools when the new school year starts at the end of July.

Infant Malnutrition: On the 11th of January, we started the profiling and survey of the children in Welajung enrolling 45 children into the program there. Here we will continue to utilize the LittleBits micronutrients that are being supplied to us as a donation from Amway (via David Vanderveen). When combined with the on-going program at Taillelu, we now have 87 children we are providing direct intervention for.



Farming Project

In January, we hired a new Farming Assistant (starting on 1st February) who will be focused solely



on working with the local farmers in the area to help implement year-round farming techniques and crop rotation. Our aim with these new farming projects is to have the farmers learn to grow crops year-round with local produce that we will buy directly from them to sustain our School Lunch and Infant Nutrition food requirements. By doing so, we will also be aiming to build economic opportunities for the local people and provide

a source of stable income and intern help their children benefit from the nutritional food they are growing in their fields. Our first is with the Woman's Group in Welajung who will start by planting buncis and mung bean, two staples of our school lunch and infant nutrition menus. Once this site is up and running, the next location will be to head back to our previous project in Matanyira.

Education

English Class: Just after new year Rose Asty and the team started up the afternoon English classes for the local children in the surrounding area of Matanyira (Lamboya). On average, we have 83 students in attendance in class and class size can wind up some days being as many as 130 students. Great progress by the children in their use and understanding of the English language can be see when out on tour with guests from the hotel whenever we take them to visit Matanyira for school lunch project (served every Monday, Wednesday and Friday). As soon as the car pulls into the school kids are already crowding around eager to speak English and practice their new skills with the guests. It is a great opportunity to highlight how little it takes to make such a difference.



To help support the English class project, we are building a small learning hut at Kerewe beach that will host community English classes for the children in that area. The building has already started and this small hut will be able to accommodate +80 children for class. We anticipate to have the hut completed by the end of

February inclusive of a "rolling library" tailor made locally to be stored locally at Kerewe and be readily available for children to use for class. This will be the mock-up for all future satellite learning huts that will relate back to the core Learning Development Center at Hobabawi.

Health Programs

Clinics: This past month across all four clinics we saw a total of 2,268 patients and treated them 2,260 different cases of illness, disease, infection, inflection and general consultation. Our busiest clinic this month was Matanyira clinic seeing 916 patients and treating them for 922 different cases.



In addition to this number, we did Ultra Sound Screening for 28 different pregnant women at Hobawawi Clinic, Matanyira Clinic and Nihi Staff during the hotel monthly malaria screening. Across all four clinics we screened 1081 patients for malaria with 332 of them testing positive and receiving immediate treatment. The team also did two different team building events at Hobawawi and Matanyira clinics which involved helping to dig and install new water piping at Hobawawi to connect it to the water project Hobawawi II, and general cleaning and landscaping at both clinic sites.

General Malaria Control:

For January, the Health Project team spent their afternoons wrapping up screening in Ringurara and starting screening in Rajaka area covering 4 dusuns comprised of 12 villages. At total of 625 patients were tested in Rajaka and out of them only 12 positive cases were confirmed or 1.9% of the tested population in that area.



In wrapping up our work at Ringurara we distributed a total of 779 mosquito nets across all four dusuns in that area. In addition, as requested from Nihi Sumba Island we assisted with the purchase and transfer of 300 mosquito nets that would be distributed by the hotel's HR Department. We also performed our monthly malaria screening for 291 hotel staff and 12 staff at Haweri ensuring the Nihiwatu area is as covered as possible.

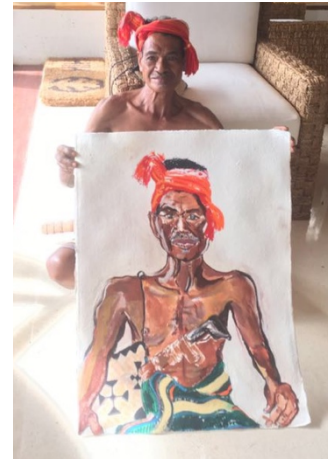
Malaria Training Center: On the 15th of January, we welcomed the first of the new classes at the training center, a total of 12 students started the full 1 month long course for their certification in Malaria Microscopy and Malaria Treatment. In connection with this we had a guest speaker from Kupang who came in for a day to teach the students about anti-corruption and prevention in the health sector. On the 2nd of February, the students went into the field to do Mass Blood Screening in a village just above Kewere Beach and their final exam took place over the course of two days on the 10th and 11th.



Sumba Eye Program: It was recently confirmed that the group of Australian Eye Doctors from the Royal Australian College of Surgeons (RACS) that they will be coming out in April for their annual survey trip and to make the necessary preparations for the coming round of surgeries and mass eye screenings in August/September later this year.

Social Media and Nihi Guests

For the month of January, we focused on finalizing the build and structure of the new website and aim to have the site launch in time for the opening of the new season as guests start to return to the resort in March. All documents have now been signed off on for the design and navigation and Citrus is working to update the staging server while internally we review and revise all online content for projects past, current and future. Our presence on Instagram continues to grow and we are now at 2,547 followers. This month was a bit slower for tour attendance having taken only 41 guests out on 10 separate tours, however we still saw \$7,872 USD worth of donation come in with two wonderful donations from Craig and Susan McCaw (and family) of \$3,000 USD and Jerome and Maya Phipps for \$1,200 USD. We also had Lola Montes who while staying at the resort requested to do portraits of various Sumbanese staff and people from the village, offering that the sales of these painting later on would be donated to the foundation estimating sales per portrait between \$6k-\$15k.



On behalf of the Sumbanese, thank you all for your continued support.

The Sumba Foundation

www.sumbafoundation.org



Our Mission

The Sumba Foundation is deeply committed to lessening the consequences of poverty on the island of Sumba. Our aim is to provide humanitarian aid by fostering village-based projects that impact health (including access and malaria control), education, water, and income-generation, while preserving and respecting the fragile culture and traditions of the Sumbanese people.

A large part of the financial support for the foundation comes from guests of the Nihiwatu Resort. With their involvement, we can create small miracles every day.

Contributions to this report provided by: Rainy Octora (Head of Nutrition Projects), Cosmos Biaya (Social and Community Relations), Dr. Claus Bogh (Director of Health Programs) and Kenny Knickerbocker (General Manager)
Cover photo and end page photo courtesy of Jason Childs